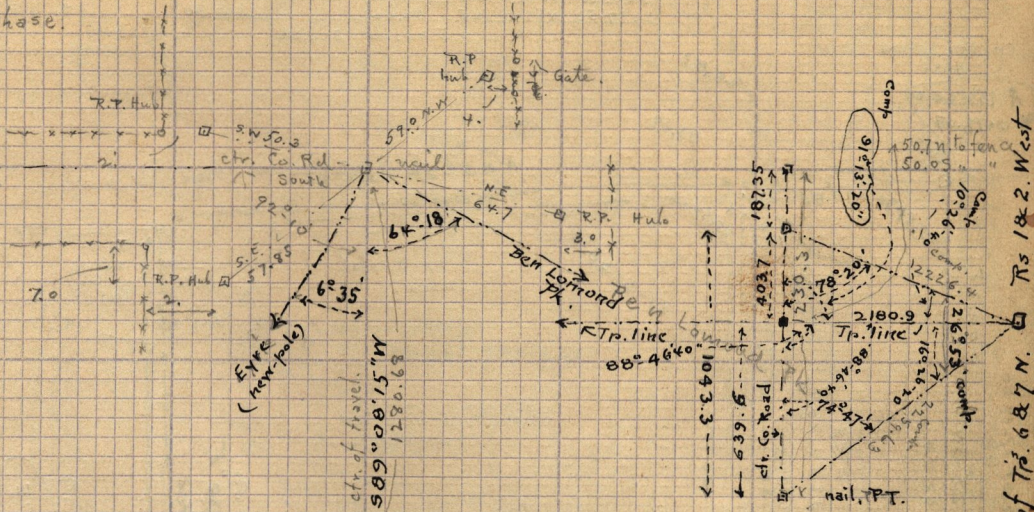


(stakes set 14' each side of ctr. line)

Sept. 8-1920 (63)

D. Chase.

Road runs S. to Mariots



Cor. of Tr. 687 N. Tr. 182 West

Left 5° 20' External 1.2

50.03  
Key Curve 58  
External = 1.09

Left 19° 50' External 9.0 ft

111.31  
Curve 93.00  
External 9.65

Left 66° 31' External 62.9 ft

208.77  
18° 00'  
62.35  
LC = 36.9 ft

N 66° 01' 45" W  
4041.98

Co. Mt 25

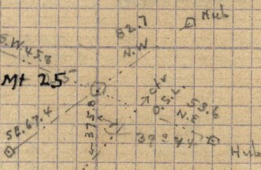
56.67

57.50

52.95

53.88

53.88



Stake

N 0° 29' 15" E 1173.61

Hub

Hub

Hub

Hub

P.C.

137.6  
127.6  
137.6

7.7

P.C.

158.2  
1914.0  
425.8

P.T.

P.T.

P.T.

P.T.

P.T.

P.T.

P.T.

P.T.

P.T.

P.T.

Mt 25  
{ A 337 + 88.97  
B 24 + 42.32 }

P.O.T.

{ A 327 + 93.00  
B 47 + 88.22 } = P.I.